

BHARATMAPS

<https://bharatmaps.gov.in>

Ministry of Electronics and
Information Technology



Government of India

BharatMaps is a multi layered GIS platform/web service comprising of seamless country wide base maps, satellite images and hybrid maps aligned as per the global geo-spatial standards. It is an essential component of Digital India program to ensure easy, effective and economical governance. It would provide GIS based decision support system to central/state government departments for delivering citizen centric services.



SALIENT FEATURES

Incorporated OGC standards based spatial data repository.

2

Seamless mosaics of IRS images of varying resolutions like AWiFS (56m), LISS-III (23.5m) and PAN (5.8m).

4

Leveraging additional content with external global services using mash ups.

6

Linkage to attribute data like census etc.

8

1

A robust and scalable framework based on service oriented architecture (SOA).

3

Tiled base maps at 14 different scales up to 1:4K

5

Terrain Base Map service featuring shaded relief imagery.

7

Rich Internet Application (RIA) with cross platform support based on javascript API

LAYERS

Administrative boundaries upto village level

State /District / Sub District / Panchayat HQ & Village Locations

Settlements

Parliamentary Constituency / Assembly Constituency

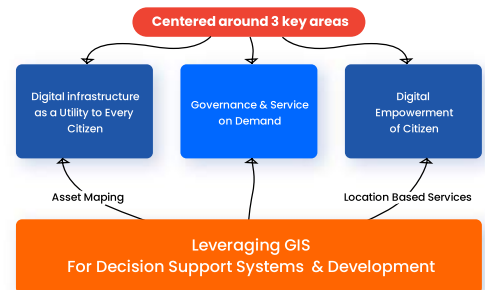
Transportation

Forest

Watershed

Waterbodies and Drainage

GIS DSS as key component of Digital India



Bharatmaps is a common technology platform and service cutting across key areas of Digital India Vision

FUNCTIONALITIES

	Map Viewer with GIS Navigation Tools (Zoom In, Zoom Out, Pan and Full Extent)	Bookmark	Area of Interest	
Identify	Table of Contents	Legend	Geo-Code Locator Search	Swipe/Spotlight Tools
Measure	Base Map Gallery	Print	Upload and View CSV	Elevation Profile

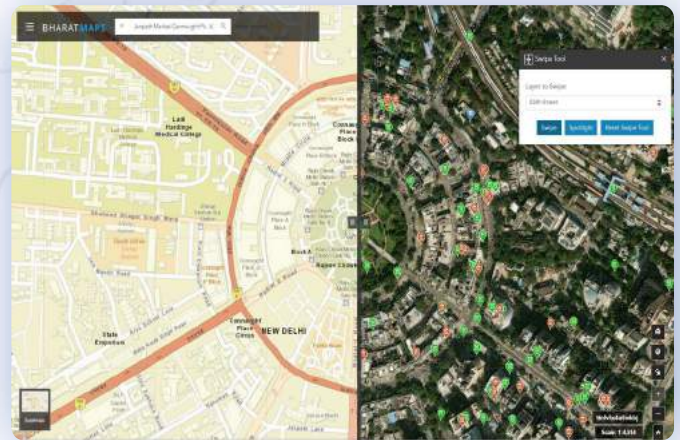
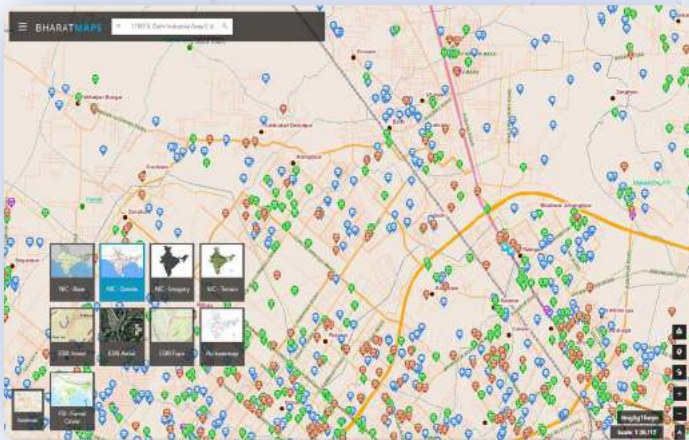
OTHER UTILITIES IN G TO G DOMAIN

ONLINE THEMATIC MAP:

This enables stakeholders to upload CSV file and create self-service map.

MAP THE NEIGHBOURHOOD:

This utility enables stakeholders to map the various public assets on GIS. This will be utilized for controlled crowd sourcing from Govt. users.



NATIONAL INFORMATICS CENTRE
 MINISTRY OF ELECTRONICS AND INFORMATION TECHNOLOGY
 A-BLOCK, CGO COMPLEX, LODHI ROAD,
 NEW DELHI - 110003.



<https://bharatmaps.gov.in>